



ME Flue System

SCHIEDEL

Single wall, connecting flue pipe
and chimney liner

www.schiedel.com/uk

International version - Updated 16 October 2024

System description

ME system is a modular single wall flue/chimney system, made of stainless steel with a silicone sealing ring. It is a universal flue/chimney system which is suitable for both high and low temperatures, non-condensing and condensing applications with flue gasses under positive and negative pressure. It can resist a chimney fire.

Therefore the system is suitable for a wide range of applications such as boilers, stoves, ovens and a ventilation system. The system can also be used for CHP applications, in this case a special VITON® sealing ring might be necessary.

Applications

- Flue system for condensing heaters and boilers
- Air inlet & ventilation systems
- Connecting flue pipe
- Chimney renovation

Advantages

- Interfits with MF and UE
- High quality stainless steel system
- Incorporates silicone sealing ring
- Universal application
- Light weight
- Soot-fire resistant

Technical characteristics / Approvals

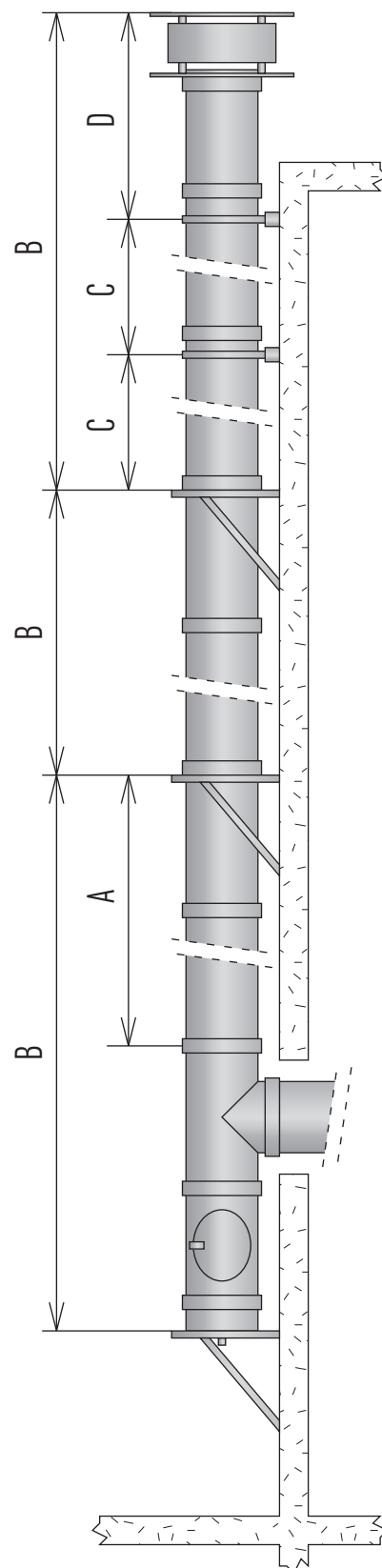
Technical characteristics		
Application	System Chimney/Connecting Flue Pipe/Chimney Liner	
Operating mode	Dry/wet	
Pressure	N1/P1/H1	
Max. working pressure	5000 Pa	
Max. operating temperature	600°C (negative pressure - N1 applications) 200°C (positive pressure - P1/H1 applications)	
Soot Fire Resistant*	Yes (see G designations below) No (see O designations below)	
Inner wall	material	AISI 316L/EN 1.4404
	thickness	Ø80 - Ø200: 0.4mm Ø250 - Ø300: 0.5mm Ø350: 0.6mm
Fuel type	Oil/wood/coal/pellets normal (wood)/gas	
Sealant	Elastomer. (Where case flue gas temperatures exceed 200°C, sealants as well as the cap and door seals should be removed before installation)	
Chimney diameter		
Diameter (mm)	80 100 113 130 150 180 200 250 300 350	
Cross section (cm ²)	50 79 100 133 177 254 314 491 707 962	
Weight (±kg/m)	0.8 1 1.13 1.3 1.5 1.8 2 4 4.5 5.5	
Schiedel ME is CE Certified to EN1856-1 TÜV 0036 CPR 91418 108 with designations:		
SYSTEM CHIMNEY EN1856-1	200 P1/H1 W V2 L50040 O30	
Schiedel ME is CE Certified to EN1856-2 TÜV 0036 CPR 91418 109 with designations:		
CONNECTING FLUE PIPE EN1856-2	T200 P1/H1 W V2 L50040 O30 M T600 N1 D V2 L50040 G400 M	
Schiedel ME is CE Certified to EN1856-2 TÜV 0036 CPR 91418 128 with designations:		
CHIMNEY LINER EN1856-2	T200 P1/H1 W V2 L50040 O T600N1 D V2 L50040 G	

Installation guidelines

- A. Maximum height above Tee piece when chimney is supported by wall support at base.
- B. Maximum height that can be borne by a wall support.
- C. Maximum distance between lateral supports i.e. wall bands and wall supports.
- D. Maximum free standing height above last support.
 - For non-vertical parts of the flue system, the maximum distance between two wall bands i.e. brackets is 1,5 m
 - In case of a condensing application a slope of 3° is required on horizontal systems to allow condensate to run off.

Mounting heights and distances											
Ø (mm)		80	100	113	130	150	180	200	250	300	350
A (m)	45° Tee	50	50	50	50	50	40	35	30	30	25
	87/90° Tee	50	50	50	50	50	40	35	30	30	25
	Inspection Element	-	-	50	50	50	40	35	30	30	25
B (m)	Side Plates (Pair)	30	30	30	30	30	30	30	30	30	-
	Wall Support Band	50	50	50	50	50	40	35	30	30	25
	Cantilever Arms	30	30	30	30	30	30	30	30	30	30
	Wall Support Element	-	-	-	-	-	-	-	-	-	30
	Shaft Support*	10	10	10	10	10	10	10	-	-	-
	Cover Plate	-	-	-	-	10	10	10	10	10	10
	Shaft Support	-	-	20	20	20	20	20	20	-	-
	Bend w/ Support	-	-	-	-	-	-	10	10	10	10
	Bend w/ Support	10	10	10	10	10	10	-	-	-	-
	"U" Profile	10	10	10	10	10	10	10	10	10	10
C (m)	Wall Band	4	4	4	4	4	4	4	4	4	4
	Wall Support Band	-	-	-	-	4	4	4	4	4	4
	Spacer Band	3	3	3	3	3	3	3	3	3	3
	Mounting Band	3	3	3	3	3	3	3	3	-	-
D (m)	Wall Band	2	2	2	2	2	2	2	2	2	2
	Extended Wall Band	-	-	-	-	2	2	2	2	2	2
	Extended Wall Band + Static Locking Band	-	-	-	-	-	3	3	3	3	3
	Wall Support Band	1.5	1.5	1.5	1.5	1.5	1.5	1.5	1.5	1.5	1.5
	Mounting Band	1.5	1.5	1.5	1.5	1.5	1.5	1.5	1.5	-	-

* Provided that the joints above and below the last connection point are reinforced with a structural locking band (MESK)



Starting components / Adaptors



Boiler adaptor with outer sealing ring									
Ø	80	100	130	150	180	200	250	300	350
D	79	99	129	149	179	199	249	299	349
SAP Code	176478	176479	176480	176481	176482	176483	161255	161256	161257



Increaser														
Ø	80	100	113	130	130	130	150	150	180	180	200	200	250	300
D	60	80	100	80	100	113	100	130	130	150	150	180	200	250
H	165	165	165	155	145	195	195	195	140	195	155	195	230	230
Z	50	50	50	50	50	50	50	50	50	50	50	50	50	50
SAP Code	161874	161876	161877	161878	161879	161880	161881	161882	161883	161884	161885	161886	161887	161888



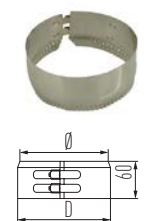
Increaser, eccentric									
Ø	100	113	130	150	180	200	250	300	
D	80	100	113	130	150	180	200	250	
SAP Code	161892	161893	161894	161895	161896	161897	161898	161899	



Reducer									
Ø	100	113	130	150	180	200	250	300	350
D	130	130	150	180	200	250	300	350	400
H	165	195	195	195	195	230	230	230	230
Z	50	50	50	50	50	50	50	50	50
SAP Code	161907	161908	161910	161911	161912	161913	161914	161915	161916

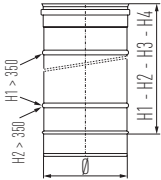


Adaptor double female										
Ø	80	100	113	130	150	180	200	250	300	350
SAP Code	176466	176467	176468	176469	176470	176471	176472	161142	161143	161144

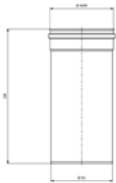


Boiler adaptor band									
Ø	100	130	150	180	200	250	300	350	400
D	110	140	160	190	210	260	310	360	410
SAP Code	176473	176474	176475	176476	176477	161244	161245	161246	161247

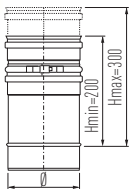
Pipe lengths



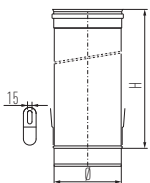
Length ME 100/50/25/10										
Ø	80	100	113	130	150	180	200	250	300	350
H1	945	945	945	945	945	945	945	945	945	945
H2	445	445	445	445	445	445	445	445	445	445
H3	195	195	195	195	195	195	195	195	195	195
H4	100	100	100	100	100	100	100	100	100	100
SAP Code	176544	176545	176546	176547	176548	176549	176550	160866	160867	160868
SAP Code	176565	176566	176567	176568	176569	176570	176571	160908	160909	160910
SAP Code	176558	176559	176560	176561	176562	176563	176564	160894	160895	160896
SAP Code	176551	176552	176553	176554	176555	176556	176557	160880	160881	160882



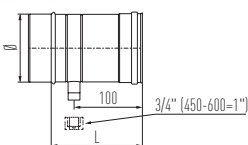
1 Piece adjustable length										
Ø	80	100	130	150	180	200	250	300	350	
SAP Code	COA	176836	176838	176839	176840	176841	176842	176843	176844	



2 Piece adjustable length										
Ø	80	100	113	130	150	180	200	250	300	350
SAP Code	176484	176485	176486	176487	176488	176489	176490	161412	161413	161414

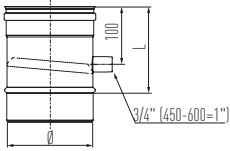


Lowering Pipe										
Ø	80	100	113	130	150	180	200	250	300	
H	955	955	955	955	955	955	955	955	955	
SAP Code	COA	COA	COA	164793	164794	164795	164796	164797	164798	

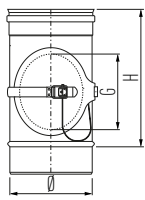


Probe length										
Ø	80	100	113	130	150	180	200	250	300	350
L	150	150	150	150	150	150	150	150	150	150
SAP Code	161163	161164	161165	161166	161167	161168	161169	161170	161171	161172

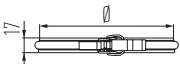
Pipe lengths



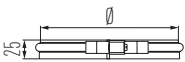
Condensate collector with drain point										
Ø	80	100	113	130	150	180	200	250	300	350
L	150	150	150	150	150	150	150	145	145	155
SAP Code	COA	161177	COA	161178	161179	161180	161181	161182	161183	161184



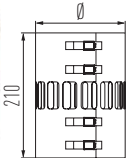
Inspection element										
Ø	80	100	113	130	150	180	200	250	300	300
H	200	200	200	250	250	250	250	250	300	300
G	65	100	100	130	140	140	140	140	180	180
SAP Code	161196	161197	161198	161199	161200	161201	161202	161202	161203	161204



Locking band										
Ø	80	100	113	130	150	180	200	250	300	350
SAP Code	161273	161274	161275	161276	161277	161278	161279	161280	161281	161282
* For internal use only										



Locking band with screw fitting										
Ø	80	100	113	130	150	180	200	250	300	350
SAP Code	161290	161291	161292	161293	161294	161295	161296	161297	161298	161299
* For internal use only										



Reinforced locking band										
Ø	80	100	113	130	150	180	200	250	300	350
SAP Code	161533	161534	161535	161536	161537	161538	161539	161540	161541	161542

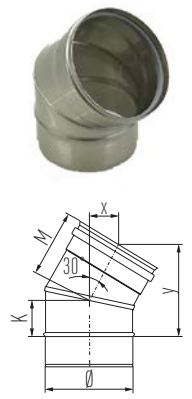


Seals										
Ø	80	100	113	130	150	180	200	250	300	350
SAP Code	160574	160575	*	160576	160577	160578	160579	160580		
VITON										
For oil containing flue gases, or T200 H1 Applications										
SAP Code	900012446	900012447	900012448	900012449	900012450	900012451	900012452	900012453	900012454	900012455
SILICONE										
For oil containing flue gases, or T200 H1 Applications										

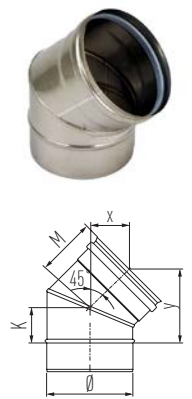
Bends



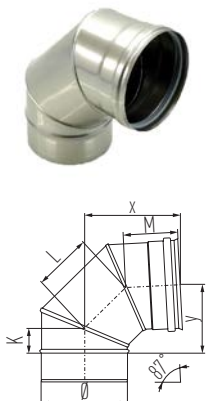
Elbow 15°										
Ø	80	100	113	130	150	180	200	250	300	350
K	35	40	40	45	50	55	60	70	70	70
M	80	85	85	90	95	100	105	115	115	115
x	20	20	20	20	25	25	25	30	30	30
y	105	115	120	125	135	145	155	175	175	175
SAP Code	176406	176407	176408	176409	176410	176411	176412	160982	160983	160984



Elbow 30°										
Ø	80	100	113	130	150	180	200	250	300	350
K	35	40	40	45	50	55	60	70	70	70
M	80	85	85	90	95	100	105	115	115	115
x	40	40	40	45	45	50	50	55	55	55
y	100	110	110	120	130	135	145	165	165	165
SAP Code	176413	176414	176415	176416	176417	176418	176419	160996	160997	160998

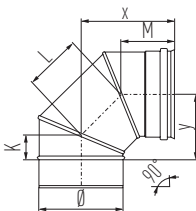


Elbow 45°										
Ø	80	100	113	130	150	180	200	250	300	350
K	35	40	40	45	50	55	60	70	95	95
M	80	85	85	90	95	100	105	115	140	140
x	55	60	60	60	65	70	70	80	95	95
y	90	95	95	105	115	125	130	150	190	190
SAP Code	176420	176421	176422	176423	176424	176425	176426	161010	161011	161012



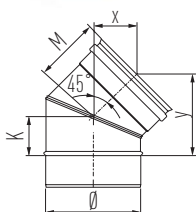
Elbow 87°										
Ø	80	100	113	130	150	180	200	250	300	350
K	35	40	40	45	50	55	60	70	95	95
L	100	105	115	115	125	145	165	185	210	210
M	80	85	85	90	95	100	105	115	140	140
x	150	160	165	170	185	200	220	245	290	290
y	105	115	120	125	140	160	175	200	245	245
SAP Code	176427	176428	176429	176430	176431	176432	176433	161024	161025	161026

Bends



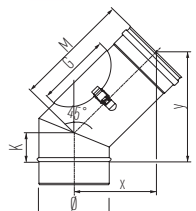
Elbow 90°

Ø	80	100	113	130	150	180	200	250	300	350
K	35	40	40	45	50	55	60	70	95	95
L	100	105	115	115	125	145	165	185	210	210
M	80	85	85	90	95	100	105	115	140	140
x	150	160	165	170	185	200	220	245	290	290
y	105	115	120	125	140	160	175	200	245	245
SAP Code	176434	176435	176436	176437	176438	176439	176440	161038	161039	161040



Adjustable elbow 0-45 deg. (N1 applications only)

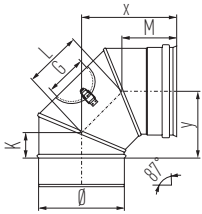
Ø	113	130	150	180	200
K	50	55	55	65	70
M	95	100	105	110	110
x	65	70	75	80	80
y	115	125	130	140	145
SAP Code	176461	176462	176463	176464	176465



Elbow 45° with inspection cover (T200 P1 Applications only)

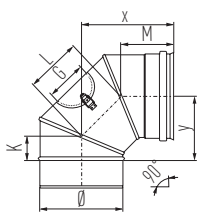
Ø	130	150	180	200	250	300	350
G	130	140	140	140	180	180	180
K	55	60	70	70	70	70	120
M	250	250	250	250	250	250	250
x	175	175	175	175	175	175	175
y	230	235	245	245	245	250	300
SAP Code	176441	176442	176443	176444	161055	161056	161057

Bends



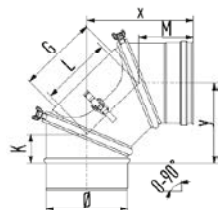
Elbow 87° with inspection cover (T200 P1 Applications only)

Ø	80	100	113	130	150	180	200	250	300	350
G	65	100	100	130	140	140	140	180	180	180
K	35	40	40	45	50	55	60	70	95	95
L	100	105	115	115	125	145	165	185	210	210
M	80	85	85	90	95	100	105	115	140	140
x	150	160	165	170	185	200	220	245	290	290
y	105	115	120	125	140	160	175	200	245	245
SAP Code	176445	176446	176447	176448	176449	176450	176451	161066	161067	161068



Elbow 90° with inspection cover (T200 P1 Applications only)

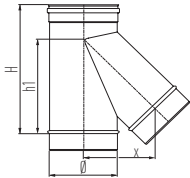
Ø	80	100	113	130	150	180	200	250	300	350
G	65	100	100	130	140	140	140	180	180	180
K	35	40	40	45	50	55	60	70	95	95
L	100	105	115	115	125	145	165	185	210	210
M	80	85	85	90	95	100	105	115	140	140
x	150	160	165	170	185	200	220	245	290	290
y	105	115	120	125	140	160	175	200	245	245
SAP Code	176452	176453	176454	176455	176456	176457	176458	161080	161081	161082



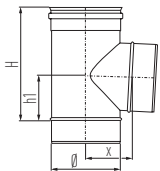
Elbow 90° with inspection cover (N1 Applications only)

Ø	130	150
G	130	140
K	45	50
L	115	125
M	90	95
x	170	180
y	125	135
SAP Code	176459	176460

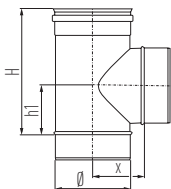
Tees



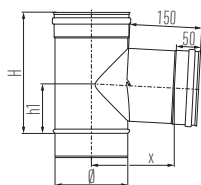
Tee-piece 45°										
Ø	80	100	113	130	150	180	200	250	300	350
H	340	380	420	450	450	470	470	600	690	690
h1	190	230	280	310	310	310	310	410	450	500
x	115	135	145	155	165	175	185	285	340	360
SAP Code	165910	161553	161554	161555	161556	161557	161558	161559	161560	161561
*on request										



Tee-piece 87°										
Ø	80	100	113	130	150	180	200	250	300	350
H	200	200	200	250	250	300	300	350	450	500
h1	75	75	75	100	100	125	125	150	200	225
x	65	80	85	95	105	120	130	155	185	210
SAP Code	176491	176492	176493	176494	176495	176496	176497	161573	161574	161575



Tee-piece 90°										
Ø	80	100	113	130	150	180	200	250	300	350
H	200	200	200	250	250	300	300	350	450	500
h1	75	75	75	100	100	125	125	150	200	225
x	60	70	75	85	95	110	120	145	170	195
SAP Code	176498	176499	176500	176501	176502	176503	176504	161587	161588	161589

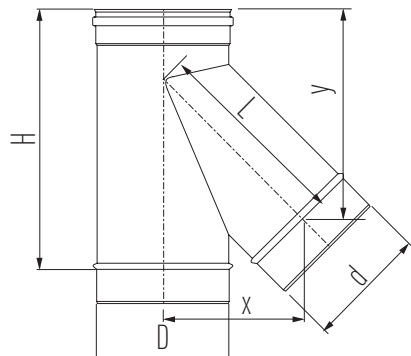
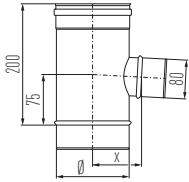


Tee-piece 87° with detachable branch (N1 Applications only)				
Ø	113	130	150	180
H	200	250	250	300
h1	75	100	100	125
x	155	165	175	190
SAP Code	176505	176506	176507	176508

Tees



Tee-piece 87°, reducing						
Ø	100	130	150	180	200	250
x	75	90	100	115	125	150
SAP Code	176509	161857	176510	176511	176512	176513



Tee-piece 45°, reducing

Table for H	D = Body Ø							
Ø	100	130	150	180	200	250	300	350
80	380	380	380	380	380	380	380	380
100		380	380	380	380	380	380	380
130			450	450	450	450	450	450
150				450	450	450	450	450
180					470	470	470	470
200						470	470	470
250							470	470
300								690

Tee-piece 45°, reducing

Table for x	D = Body Ø							
Ø	100	130	150	180	200	250	300	350
80	35	150	160	175	185	210	235	260
100		157	167	182	192	217	242	267
130			178	193	203	228	253	278
150				200	210	235	260	285
180					220	245	270	295
200						252	277	302
250							295	320
300								338

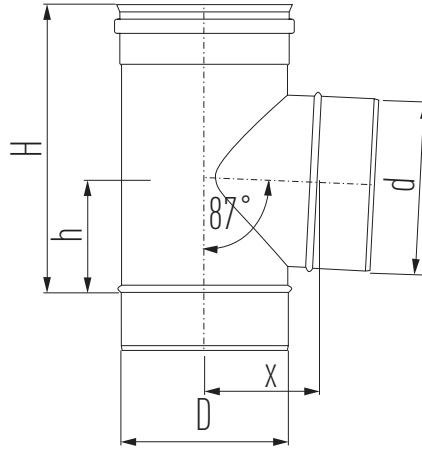
Tee-piece 45°, reducing

Table for L	D = Body Ø							
Ø	100	130	150	180	200	250	300	350
80	191	212	226	247	261	297	332	367
100		222	236	257	271	307	342	377
130			251	272	286	322	357	392
150				282	296	332	367	402
180					311	347	382	417
200						357	392	427
250							417	452
300								477

Tee-piece 45°, reducing

Table for y	D = Body Ø							
Ø	100	130	150	180	200	250	300	350
80	241	241	241	241	241	241	241	241
100		263	263	263	263	263	263	263
130			294	294	294	294	294	294
150				316	316	316	316	316
180					347	347	347	347
200						369	369	369
250							422	422
300								475

Tees

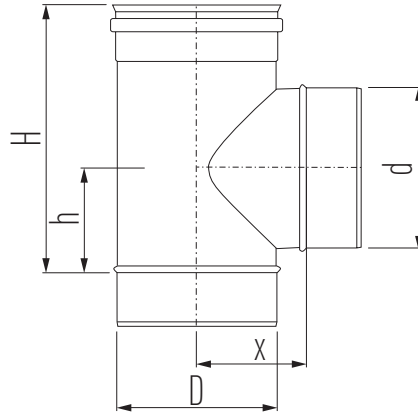


Tee-piece 87°, reducing									
Table for H		D = Body Ø							
Ø	100	130	150	180	200	250	300	350	
80	200	200	200	200	200	200	200	200	200
100		200	200	200	200	200	200	200	200
130			250	250	250	250	250	250	250
150				250	250	250	250	250	250
180					300	300	300	300	300
200						300	300	300	300
250							350	350	350
300								450	450

Tee-piece 87°, reducing									
Table for x		D = Body Ø							
Ø	100	130	150	180	200	250	300	350	
80	80	95	105	120	130	155	180	205	
100		95	105	120	130	155	180	205	
130			105	120	130	155	180	205	
150				120	130	155	180	205	
180					130	155	180	205	
200						155	180	205	
250							180	205	
300								205	

Tee-piece 87°, reducing									
Table for h		D = Body Ø							
Ø	100	130	150	180	200	250	300	350	
80	75	75	75	75	75	75	75	75	75
100		75	75	75	75	75	75	75	75
130			100	100	100	100	100	100	100
150				100	100	100	100	100	100
180					125	125	125	125	125
200						125	125	125	125
250							150	150	150
300								200	200

Tees

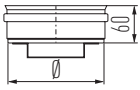


Tee-piece 90°, reducing									
Table for H		D = Body Ø							
Ø		100	130	150	180	200	250	300	350
80	↑ d = branch Ø ↓	200	200	200	200	200	200	200	200
100			200	200	200	200	200	200	200
130				250	250	250	250	250	250
150					250	250	250	250	250
180						300	300	300	300
200							300	300	300
250								350	350
300									450

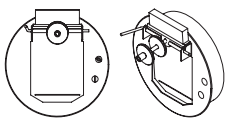
Tee-piece 90°, reducing									
Table for x		D = Body Ø							
Ø		100	130	150	180	200	250	300	350
80	↑ d = branch Ø ↓	80	95	105	120	130	155	180	205
100			95	105	120	130	155	180	205
130				105	120	130	155	180	205
150					120	130	155	180	205
180						130	155	180	205
200							155	180	205
250								180	205
300									205

Tee-piece 90°, reducing									
Table for h		D = Body Ø							
Ø		100	130	150	180	200	250	300	350
80	↑ d = branch Ø ↓	75	75	75	75	75	75	75	75
100			75	75	75	75	75	75	75
130				100	100	100	100	100	100
150					100	100	100	100	100
180						125	125	125	125
200							125	125	125
250								150	150
300									200

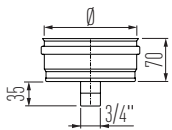
Tees



End cap for tee-piece										
Ø	80	100	113	130	150	180	200	250	300	350
SAP Code	161838	161839	161840	161841	161842	161843	161844	161845	161846	161847



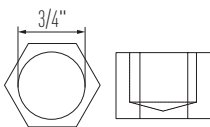
Draught stabiliser, adjustment range from 10 till 25 pa			
Ø	130	150	180
SAP Code	164852	164853	164854



Draincap										
Ø	80	100	113	130	150	180	200	250	300	350
SAP Code	161419	161420	165899	161421	161422	161423	161424	161425	161426	161427



Lateral drain cap										
Int Ø	80	100	130	150	180	200	250	300	350	350
SAP Code	174535	174536	174537	174538	174539	174540	174541	174542	174543	161233

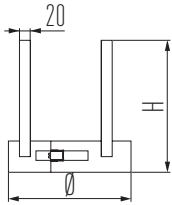


Cap	
SAP Code	9000012126

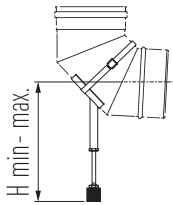
Support components



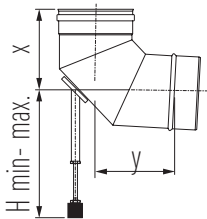
Spacer band											
Ø	80	100	113	130	150	180	200	250	300	350	
H	170	170	170	170	170	170	170	190	190	190	
SAP Code	160925	160926	160927	160928	160929	160930	160931	160932	160933	160934	



Support band for elbow 87°							
Ø	80	100	113	130	150	180	
H min	130	130	130	130	130	130	130
H max	200	200	200	200	200	200	200
SAP Code	161107	161108	161109	161110	161111	161112	



Support with elbow 87°				
Ø	200	250	300	350
Hmin	210	210	210	210
Hmax	235	235	235	235
x	220	245	290	290
y	175	200	245	245
SAP Code	161045	161046	161047	161048

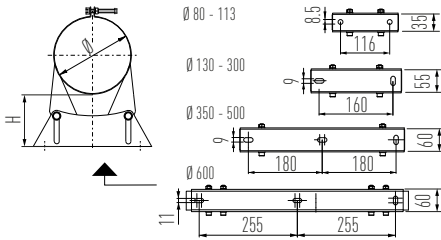


Ceiling hanger										
Ø	80	100	130	150	180	200	230	250	300	
Ext Ømm	130	150	180	200	230	250	280	300	350	
SAP Code	110118	110199	110392	112037	112279	112503	128623	112870	129129	

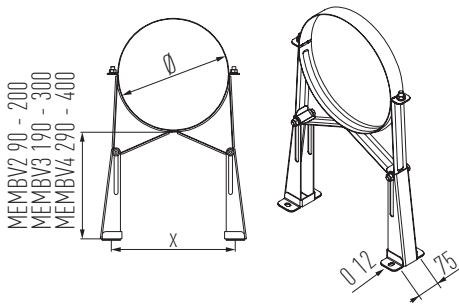
Support components



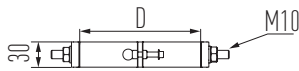
Wall band adjustable											
∅	80	100	113	130	150	180	200	250	300	350	
H	25-50	25-50	25-50	50-90	50-90	50-90	50-90	50-90	50-90	50-90	
SAP Code	161363	161364	161365	161366	161367	161368	161369	161370	161371	161372	



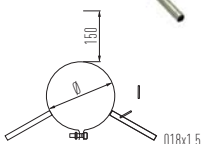
Wall band adjustable							
∅	150	180	200	250	300	350	
x	180	210	230	280	330	380	
SAP Code	165868	165869	164847	161380	165870	165871	
SAP Code	165873	165874	165875	165876	165877	165878	
SAP Code	165880	165881	165882	165883	165884	165885	



Band for wall support											
∅	80	100	113	130	150	180	200	250	300	350	
D	80	100	113	130	150	180	200	250	300	350	
SAP Code	161390	161391	161392	161393	161394	161395	161396	161397	161398	161399	



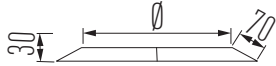
Shaft support						
∅	100	113	130	150	180	200
SAP Code	161547	161548	161549	161550	161551	161552



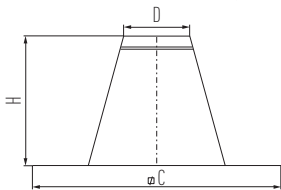
Flashings



Storm collar									
Ø	80	100	113	130	150	180	200	250	
A	205	225	255	255	275	305	325	375	
SAP Code	161440	161441	164885	161442	161443	161444	161445	161446	



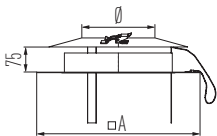
Flat roof flashing									
Ø	80	100	130	150	180	200	250	300	350
D	90	110	160	190	210	240	310	360	410
C	370	390	440	470	490	520	590	640	690
H	200	200	315	315	315	315	315	315	315
SAP Code	161149	161150	161151	164815	164816	*	164818	164819	*



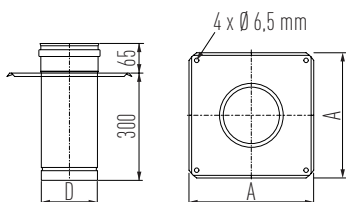
Terminals



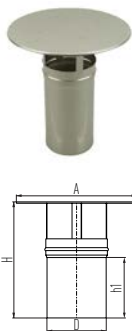
Shaft cover plate with ventilation										
Ø	80	100	113	130	150	180	200	250	300	350
A	335	335	335	335	335	425	425	425	665	665
SAP Code	161450	161451	161452	161453	161454	161455	161456	161457	161458	161459



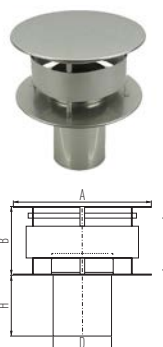
Cover plate (N1 applications only)									
Ø	113	130	150	180	200	250	300		
A	335	335	335	500	500	500	665		
D	108	125	145	175	195	245	295		
SAP Code	160939	160340	160941	160942	160943	160944	160945		



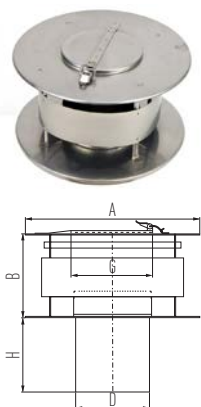
Terminals



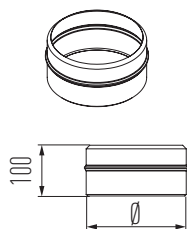
Cap				
Ø	130	150	180	200
A	285	330	395	440
D	127	147	177	197
H	330	370	440	475
h1	195	225	270	300
SAP Code	164848	164849	164850	164851



All weather cap									
Ø	80	100	130	150	180	200	250	300	350
A	175	220	330	395	440	550	660	770	880
B	90	110	165	200	220	275	330	385	440
D	78	98	128	148	178	198	248	298	348
H	120	150	210	270	300	375	450	525	600
SAP Code	161211	161212	161213	161214	161215	161216	161217	161218	161219



All weather cap with inspection										
Ø	80	100	113	130	150	180	200	250	300	350
A	175	220	285	285	330	395	440	550	660	770
B	90	110	145	145	165	200	220	275	330	385
D	78	98	110	127	147	177	197	247	297	347
SAP Code	161312	161313	161314	161315	161316	161317	161318	161319	161320	161321



Top stub								
Ø	130	150	180	200	250	300	350	
SAP Code	161334	161335	161336	161337	161338	161339	161340	



Top stub with mesh										
Ø	80	100	113	130	150	180	200	250	300	350
A	60	80	95	110	130	160	180	230	280	330
SAP Code	161342	161343	161344	161345	161346	161347	161348	161349	161350	161351



SCHIEDEL

Schiedel Chimney Systems
Crowther Estate
Washington
Tyne & Wear NE38 0AQ
Tel. +44 (0)191 416 1150
sales.uk@schiedel.com
www.schiedel.com/uk

Follow us on Social Media @SchiedelUK



A **stañdard**
INDUSTRIES COMPANY